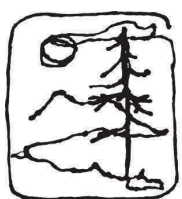


Sustainability in Prisons Project Fiscal Year 2014 Annual Report



This year was the third successful season of SPP's Taylor's checkerspot butterfly program at Mission Creek Corrections Center for Women. One butterfly technician had been with the program from the start, and she has made huge contributions to establishing and improving the program. She released just after the close of FY14, and is pursuing plans to attend college starting fall 2015. Photo by Benj Drummond and Sara Joy Steele.



**the evergreen
state college**
olympia, washington



Year in Review: photo highlights



2013 was a landmark year for SPP in two ways: ten years since the first pilot programs, and five years since formalizing the partnership between The Evergreen State College and Washington State Department of Corrections. In November 2013, SPP celebrated with tree plantings and celebrations at Cedar Creek Corrections Center and the college campus. Photos by Danielle Winder (above) and Jaal Mann (below).





This year, SPP offered more workshops and interactive sessions to students of the Science and Sustainability Lecture Series; offenders showed enthusiasm and appreciation for this approach and asked for more. Photo by Joslyn Rose Trivett.



SPP standardized and formalized certification for our education and conservation programs; here an inmate technician from Cedar Creek Corrections Center conservation crew receives acknowledgement of hours worked and demonstrated skills. Photo by Jaal Mann.



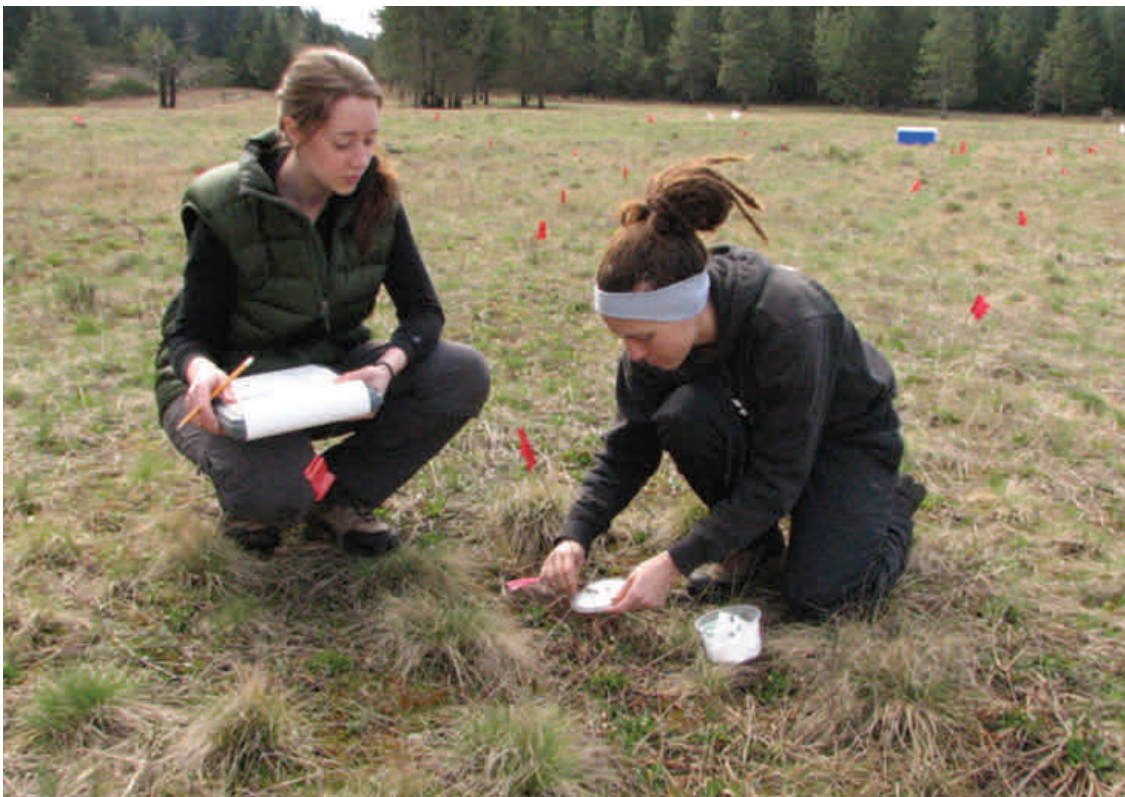
Following a successful pilot of Roots of Success environmental literacy curriculum, SPP committed to expanding the program statewide. At the end of FY14, nearly 40 staff and inmates were certified as instructors for the curriculum. Photo by Joslyn Rose Trivett.



SPP gained a western pond turtle program, caring for turtles recovering from a shell disease. Cedar Creek Corrections Center hosted a steady stream of turtles throughout the year, and provided excellent care until the animals were healthy enough to return to their wild habitat. Photo by Washington Department of Fish and Wildlife biologist.



In FY14, SPP was instrumental in establishing a Prairie Conservation Crew from Cedar Creek Corrections Center that works solely on restoration. The crew serves multiple collaborating agencies and has provided greatly needed skilled labor at regional nurseries and prairie sites. Photo by Jaal Mann.



SPP's Taylor's checkerspot program had its third successful rearing and breeding season, and released 2,569 as caterpillars on local prairie sites. In this photo, Audrey Lamb of the Center for Natural Lands Management works with SPP Graduate Research Assistant Lindsey Hamilton to place the caterpillars on host plants. Photo by Kelli Bush.



At Monroe Correctional Complex's TEDx, in March 2014, three speakers highlighted SPP programs. SPP Co-Director Dan Pacholke's talk was selected for TED.com, and by November, 2014 had nearly 600,000 views. Photo by DOC staff.



Dog programs received well-deserved media coverage this year, and included some excellent photo journalism and videos. This image was in *Seattle Met's* story about Brigadoon Service Dogs which places dogs with military veterans. Photo by Michael Kane.



After a year-long hiatus, SPP's Oregon spotted frog rearing program returned for another successful season. In this photo SPP Graduate Research Assistant Fiona Edwards prepares to release a frog to its new habitat. Photo by Sadie Gilliom.



With each passing year, Evergreen and DOC become better partners with better integrated efforts. In FY14, SPP staff from both sides of the partnership brought topic experts to Coyote Ridge Corrections Center for a two day working meeting, and twenty-two participants collaborated on an action plan for the prison's sustainability programs. Photo by Kelly Frakes.



Sustainability in Prisons Project

Fiscal Year 2014 Annual Report

Contents

1. [Background Information](#) - 3
 - Report Objectives
 - SPP Mission
 - SPP Vision
 - SPP Essential Components
 - SPP Staff and Organizational Chart
 - Partnerships
2. [Budget](#) - 4
 - Funding requests
3. [Sustainability Job Programs](#) - 6
4. [Sustainable Operations](#) - 7
 - Data and Tracking
 - Materials Management
 - Farm to Prison
 - Garden to Kitchen
5. [Community Contribution Programs](#) - 8
 - Dog and Cat Programs
6. [Conservation Programs](#) - 10
 - Oregon Spotted Frog Program
 - Western Pond Turtle Program
 - Conservation Nursery Program
 - Taylor's Checkerspot Butterflies and Other Pollinators
7. [Education Programs](#) - 15
 - Lecture Series
 - Roots of Success
8. [Evaluation](#) - 20
9. [SPP Network](#) - 20
 - SPP – WA
 - SPP Network – National
 - Accomplishments
 - New Interest from Outside WA
10. [Dissemination](#) - 22
 - Presentations

SPP Products, Publications, and Internships
Media Coverage
Website and Social Media
Awards

Appendices

1. [SPP Programs in Washington State Prisons](#) - 29
2. [SPP Partner Organizations](#)- 33

1. Background Information

Report Objectives

This report provides information on SPP activities during Washington State fiscal year 2014 (FY14) which includes the period from July 1st 2013 through June 30th 2014. Washington Department of Corrections (WDOC) considers all sustainability initiatives taking place in Washington prisons to be part of SPP. The primary objective of this document is to update partners on statewide SPP activities. While this effort does not include a summary report on every program in the state, we have developed a working list (Appendix 1) of all SPP-WA programs in an attempt to acknowledge the full suite of programs offered. We will continue to improve our reporting and tracking methods each year in order to provide an increasingly comprehensive annual update of all programs within the SPP partnership.

SPP Mission

The Sustainability in Prisons Project (SPP) is a partnership founded by the [Washington State Department of Corrections](#) (WDOC) and [The Evergreen State College](#) (Evergreen). Our mission is to bring science and nature into prisons. We conduct ecological research and conserve biodiversity by forging collaborations with scientists, inmates, prison staff, students, and community partners. Equally important, we help reduce the environmental, economic, and human costs of prisons by inspiring and informing sustainable practices.

SPP Vision

This union of ideas and activities – and people inside and outside prison walls – creates a collaborative, intellectually stimulating environment in which incarcerated men and women play key roles in conservation and advancing scientific knowledge. We encourage teamwork, mutual respect and a stewardship ethic among individuals who typically have little or no access to nature or opportunities in science and sustainability. Our vision is not only to save tax dollars and natural resources, but also to help offenders rebuild their lives for the benefit of all.

SPP Essential Components

Although each endeavor and corrections institution is unique, our experiences point to five [Essential Components](#) for every SPP program:

1. Partnerships and collaborations with multiple benefits
2. Bringing nature “inside”
3. Engagement and education
4. Safe and sustainable operations
5. Evaluation, dissemination, and tracking

SPP Staff and Organization Chart

The organization chart below in Figure 1 includes current staff as of October 2014. There are many corrections, academic, conservation, and community organization staff contributing the success of SPP; however this chart is limited to core staff at WDOC and Evergreen. SPP is co-directed by Dr. Carri LeRoy from Evergreen and Mr. Dan Pacholke from WDOC. The organization currently includes two Senior Advisors, four staff, and nine program coordinators.

Program Coordinator positions are staffed by Evergreen students working 19 hours per week. Student-staff typically work for two year terms graduate program. Therefore, each summer several students complete their work with us and new students begin. Several individuals not named on the chart below

worked in various coordinator positions for SPP during FY14: Jaal Mann, Drissia Ras, Amory Ballantine, Andrea Martin, Dennis Aubrey, Brittany Gallaher, and Rachel Stendahl.

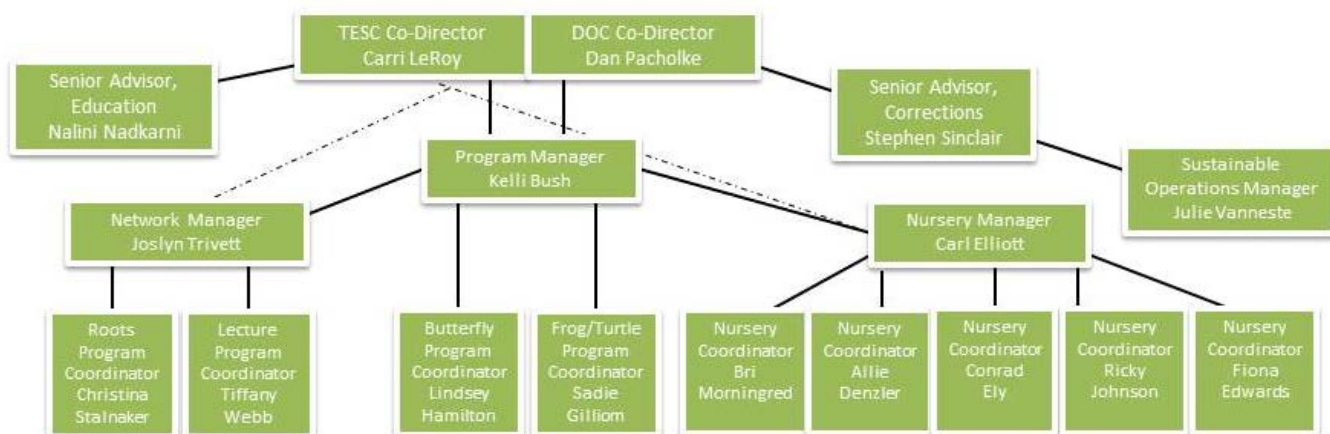


Figure 1. SPP Organizational Chart

Partnerships

Partnerships and collaboration are an essential component of SPP work and nearly every SPP program. We continually work to identify new potential partners and mutually beneficial programs. A working list of SPP partnerships is included in Appendix 3. During FY14 at least 53 different organizations contributed to SPP programs in WA.

2. Budget

Nearly all of the funds allotted to SPP were fully utilized as outlined in the grants and contracts awarded. Unfortunately, staff weren't able to complete a few key expenditures by the end of the fiscal year, leaving approximately \$900 of the WDOC contract unspent. FY14, SPP had just over \$404,000 in funds from 12 different sources. Other sources consist of state and federal contracts, foundation donations, private donations, and a federal grant.

Regular budget reports were sent to Co-Directors and SPP managers throughout the fiscal year. Reports include current funding source start and end dates, program areas supported, starting balance, current balance, notes on the status of the funding source, and payment details. A subsection of the report includes status information for pending grants, contracts, and awards.

Funds provided by the Herb Alpert Foundation (HAF) were very helpful in advancing the goals of the fledgling SPP Network and on-going evaluation work over the past year. A significant portion of SPP's funds are dedicated to specific programs such as native plant production or butterfly rearing and therefore are not available to support expansion of the SPP model. HAF funds were fully expended within the award timeframe.

Funding Requests

In addition to the funds expended from various grant and contract sources, staff continuously work to steward existing resources, close out grants and contracts, and secure new funding. Table 1 provides a summary of all funding requests submitted in FY14. Funding from some of the sources listed crosses FY14 deadlines, but all items listed represent staff effort expended in FY14. Funds were provided by sources highlighted in green. Our FY15 goal is to secure funding that will fill identified gaps in operation of the SPP Network, program evaluation, and education/training opportunities for incarcerated adults.

Table 1. SPP FY1 4 Grant and Contract Funding Requests

Source	Amount	Program Area	Funded?	Timeline
AZA	\$22,393.00	frog research	no	10/1/14- 9/30/15
DOC FY 15	\$185,341.06	SPP general	yes	7/1/14- 6/30/15
DOC FY 16	\$196,927.47	SPP general	yes	7/1/15-6/30/16
Government Innovations	\$100,000.00	SPP general	pending	unknown
JBLM	\$50,000.00	conservation nursery	yes	9/1/14-8/30/15
DOC/CI	\$25,000.00	Roots	yes	8/1/14-6/30/15
JBLM FY14	\$105,000.00	conservation nursery	yes	9/1/13-8/31/14
JBLM FY14	\$21,150.00	research assistant crew	no	unfunded
JBLM Gopher	\$36,902.00	conservation nursery	yes	5/1/13-4/30/14
NSF Supplement	\$50,000.00	Network	no	unfunded
CNLM (ACUB and other grant sources)	\$62,152.00	conservation nursery	yes	12/1/13-11/30/14
Patagonia	\$11,807.00	turtles, SPP book	no	unfunded
NSF- Human Natural Systems	\$500,000.00	Network	no, conceptual stage	unfunded
HAF 2013	\$10,000.00	Network, eval., SPP general	yes	11/30/12-11/30/13
HAF 2014	\$10,000.00	Network, eval., SPP general	yes	10/25/13-10/25/14
Seattle Foundation	\$15,000.00	SPP general	yes	unrestricted
Seattle Foundation	\$10,000.00	SPP general	yes	unrestricted
JBLM	\$111,000.00	conservation nursery	yes	9-1-14-8-30-15

*proposals highlighted in green were successfully funded

3. Sustainability Job Programs

SPP jobs provide inmates opportunities to contribute to communities and ecosystems while gaining job training, education, and sustainable living skills. The list included in Table 2 provides a snap shot of SPP jobs after the end of FY14 in October 2014. This list was developed by a small team of partners representing the WDOC and Evergreen sides of the SPP partnership. All positions have been evaluated for linkages to SPP's Five Essential Components (see *Background Information* above). New positions will likely be added for consideration in future reports.

Depending on their respective positions, participants in sustainability jobs received different levels of training and education and exposure to community collaboration, work with living things, and opportunities to contribute. Dog and cat program positions are also classified as sustainability jobs, but due to the scope and nature of these domestic animal programs, these positions are reported in a separate section of this report. In total nearly 3,000 of the approximately 16,800 men and women incarcerated in Washington are involved in sustainability jobs.

Table 2. Sustainability Jobs Snap Shot: October, 2014

Inmate Position Title	Number Employed
AQUACULTURE WORKERS	2
ASBESTOS ABATEMENT WORKER	10
BICYCLE REPAIR	22
BIKE & WHEELCHAIR REPAIR	6
BIO WASTE CUSTODIAN	4
BOOK REPAIR	1
BUTTERFLY REARING TECH	3
COMMUNITY CREW CLERK	12
COMMUNITY WORK CREWS	824
COMPOST WORKER SUSTAINABLE	14
CRAFT SUSTAINABLE CLRK	1
EYEGLOSS RECYCLING TECHNICIAN	8
FISHERIES WORKER I	21
FOOD SRVCS WASTE RECYCLER	217
FORESTRY I WORKER	565
FORESTRY II WORKER	19
FROG REARING	5
GROUNDSCOOPER I	349
GROUNDSCOOPER II	44
HORTICULTURE I WORKER	75
HORTICULTURE WORKER II	34
HORTICULTURE-THERAPEUTIC COM	13
INSIDE GROUNDSCOOPER	17
MECHANIC WHEEL CHAIR REPAIR	1
PRAIRIE PLANT CONSERVATION	19

RECYCLING WORKER	245
RE-USE FABRIC-SUSTAINABLE	60
WASTE TREATMENT OPERATOR II	7
WASTE TRT 1 OPERATOR	17
WORM FARM WORKER	16
total	2631

4. Sustainable Operations

Data and Tracking

Sustainable operations data is tracked by calendar year by the SPP Sustainable Operations Manager at WDOC. Table 3 provides the most current numbers available for the 2013 calendar year. Additional sustainable operations information will be included in the WDOC Sustainability Report in calendar year 2015. Further information is available upon request.

Leadership at WDOC sees the value of excellent data management as a means to further improve program operations and performance management. Previous data collection efforts were challenged by lack of reporting mechanisms, not by a lack of commitment. Over the last fiscal year, significant time and resources have been dedicated to upgrading data tracking systems. A new sustainability database will “go live” December 2014. This web-based system should significantly improve data collection for sustainability programs statewide.

Table 3. SPP Sustainable Operations: % Change Comparison for Calendar Years 2005 & 2013

Energy	15% reduction*
Potable Water	14% reduction
Transportation Fuels	30% reduction
Landfill waste	50% reduction
Total waste	41% reduction

*Percent change derived from consumption/generation data for calendar years 2005 and 2013 based on offender per year calculation. Total waste includes hazardous, universal, composted, landfilled, incinerated, and recycled categories.

Materials Management

Offenders are engaged in materials management at each facility. Their efforts are instrumental to land fill waste reduction. All twelve WA prisons divert organic waste to compost. Ten of the twelve facilities compost food waste on site. Every WA prison engages offenders in waste management to recycle, reuse, or repurpose materials. Waste management includes upstream waste diversion programs, downstream sorting, or a combination of both.

In calendar year 2005 the number of pounds of landfill waste per inmate was 973.38 pounds/individual. With programs in place to reduce, reuse, recycle and reclaim items, the number of pounds per inmate has been reduced to 485.85 pounds per inmate in 2013. This represents approximately 50% reduction in waste being sent to the landfill. We are continuously working to reduce waste even further.

We are working to increase educational opportunities for staff and offenders at all facilities. SPP currently offers sustainable operations education through on-the-job training, program design, educational signage, environmental literacy education, and lectures and workshops for staff and offenders. Lecture and workshop topics include composting, vermiculture, and recycling. Educational programs have partially contributed to the significant reduction of waste sent to the landfill. Further waste reductions are planned and will be supported by new infrastructure and education and training programs.

Farm to Prison

Inspired by the WDOC's goal to reduce the carbon footprint associated with produce purchases, The Farm to Prison project began as a pilot in 2011. Other program objectives included: generating market opportunities for small local farms; encouraging sustainable farm practices; developing new community partnerships; and creating meaningful opportunities for offenders. In FY 14 the Farm to Prison Project spent 180,000 dollars at local farms and orchards from the Olympic peninsula to Walla Walla, WA.

Garden to Kitchen

The Garden to Kitchen project is an effort to formalize how facility gardens supply produce to facility food services. Over the past couple of years, facility space dedicated to crops and garden yields have expanded exponentially. In 2014 DOC prison facilities grew approximately 400,000 pounds of fresh produce. SPP has been instrumental in supporting, guiding, and supplying resources to these efforts. Local Food Banks have also benefitted from these gardens. Roughly half of the facility-grown produce has been donated to a variety of food banks and community projects.

5. Community Contribution Programs

Community contribution programs are characterized as partnerships between corrections centers and community organizations. Creating partnerships with correctional facilities allows community organizations to increase capacity and provides offenders with more options to contribute to the world outside the secure perimeter. Many of these programs are well-established and predate SPP. Our objective is to acknowledge and support these productive partnerships, and to provide a comprehensive overview report of activities taking place statewide.

Dog and cat programs are the most common example of community contribution programs. Other examples of successful community contribution programs include:

- Salvaging fabrics from worn clothing and sheets and sewing them into quilts for donation to community shelters
- Assisting WA State Parks with prescribed tree thinning for forest health, processing the downed tree material for firewood, and delivering the wood to low-income families in the community for home heating
- Starting seeds and growing plants for a local non-profit
- Restoring bicycles for community donation
- Salvaging used shoes either for shipping to those in need of shoes or for recycling (ground up for new materials)
- Creating coloring books for children and inmate families
- Growing crops for local food banks, schools, and community events

Dog and Cat Programs

Dog and cat programs are common in prisons across Washington. These programs are considered part SPP because of the characteristics they have in common with conservation programs and their strong connection to SPP's five Essential Components. Nearly all of WA's prisons have formed one or more partnerships with local non-profit groups to create programs in which offenders train dogs and cats for general or service animal adoption. Inmates receive support from partner organizations to provide excellent animal care and obedience training. As detailed in Table 4, there were 307 incarcerated men and women participating in dog or cat programs in prisons across the state in October 2014. A complete list of FY14 dog and cat programs and partners is included below.

- Cedar Creek Corrections Center – Brigadoon Service Dogs
- Monroe Correctional Complex – Summit Assistance Dogs
- Mission Creek Corrections Center for Women – Prison Pet Partnership
- Washington Corrections Center – Law Enforcement Training
- Washington Corrections Center for Women – Prison Pet Partnership
- Airway Heights Corrections Center – Pawsitive Dogs in partnership with Spokanimal
- Clallam Bay Corrections Center – Welfare Animal Guild
- Coyote Ridge Corrections Center – Ridge Dogs in partnership with Benton Franklin Humane Society, Adams County Pet Rescue and Forgotten Dogs Rescue
- Olympic Corrections Center – Olympic Peninsula Humane Society
- Stafford Creek Corrections Center – Freedom Tails in partnership with Harbor Association of Volunteers for Animals (HAVA)
- Washington State Penitentiary – Blue Mountain Humane Society
- Larch Corrections Center – Larch Cat Adoption Program (LCAP) in partnership with West Columbia Gorge Humane Society and Humane Society for SW Washington
- Monroe Correctional Complex – Kitten Connections in partnership with Purrfect Pals No-kill Shelter

Table 4. Inmates Employed in Dog and Cat Programs in October 2014

Dog and Cat Care Positions	Number Employed
DOG OBEDIENCE HANDLER	201
DOG SERVICE HANDLER	15
DOG SRVCS/OBED SECONDARY	55
DOG WALKER	16
KENNEL WORKER ABKA	9
CAT HANDLER	11
<i>total</i>	307

6. Conservation Programs

SPP conservation programs represent ambitious collaboration among a variety of partners. Each program receives crucial support from a variety of contributors including inmates, corrections staff, SPP student coordinators and staff, agency scientists, and community partners. Program success is dependent on each participant contributing their expertise and time. Programs are designed to maximize benefits for each collaborator by sharing workload and leveraging resources.

Oregon Spotted Frog Program

The Oregon spotted frog (OSF; *Rana pretiosa*) is a state-listed endangered species and a candidate for federal listing; this warm water marsh species has vanished from an estimated 70% of its historic range. Since 2009, SPP has partnered with the OSF recovery group: scientists and conservation leaders from the Washington Department of Fish and Wildlife, the US Fish and Wildlife Service, and three zoos. With support of the recovery group, SPP has participated in a program to head start OSF in captivity and release them to wetlands in Pierce County.

Inmates, staff, and students have worked together to successfully raise more than 600 OSF since 2009 at Cedar Creek Corrections Center (CCCC). Results of the captive rearing program are included in Table 5 listed below. Inmate technicians are excellent at captive rearing work. They routinely achieve high rates of survival and raise large frogs closer to reproductive maturity at the time of release. Since 2009, 11 inmate technicians have received herpetological training, 6 different graduate students have coordinated the program, and 4 corrections staff have served as WDOC staff liaison for the frog and turtle programs. Since fall 2013, 3 inmate technicians have been awarded certifications for their participation in the frog and turtle program.

In 2013, the OSF captive rearing program was temporarily put on hold during recovery plan updates. Captive rearing resumed in 2014 in CCCC's new herpetological area which was designed to house both the Oregon Spotted Frog and Western Pond Turtle programs. In March 2014, 100 eggs were delivered to CCCC and cared for by 2 inmate technicians until the frogs' release in September.

Table 5. Oregon Spotted Frog Rearing at CCCC March 2009 - June 2014

Year	Eggs Received	Number Released	Overall Survival	Overwintering Received	Overwintering Released	Overall Survival	Total Released
2009	80	62	84%	5	5	100%	67
2010	99	82	83%	29	26	90%	108
2011	256 (202 viable)	163	81%	67	59	88%	222
2012	368	247	67%	11	4	36%	251
2014	100	-	-	-	-	-	-
TOTAL	903	554	69%	112	94	84%	648

Western Pond Turtle Program

The western pond turtle (*Emys marmorata*) is a state-listed endangered species and federal species of concern. The turtles once ranged from the Puget Sound lowlands through western Oregon and California to Baja, California. Recovery in Washington will require long-term efforts because the turtles mature slowly, requiring up to 10 years to produce their first offspring. Led by Washington Department of Fish and Wildlife (WDFW), partners have been working toward the recovery of western pond turtles since the late 1990s. At the start of recovery efforts, only about 150 turtles remained in the wild in two locations. Today, more than 2000 turtles have been released at 6 locations. In 2013, SPP joined partners to assist in on-going recovery efforts. The results of SPP's contributions are listed in Table 6 below.

In recent years, some western pond turtles have been afflicted by an infection of the shell ("shell disease"). In some individual turtles the disease requires an initial period of intensive care provided by veterinarians at PAWS. After completing intensive care treatments, some turtles are moved to Cedar Creek Corrections Center (CCCC) to receive extended care provided by two trained inmate technicians. The technicians provide daily maintenance care while the turtle's shells complete the healing process. An existing building at CCCC was modified to provide an appropriate environment for turtle rehabilitation. As each individual turtle is healed, animals can be released back into the wild. After their release, WDFW is monitoring the turtles to see if they remain healthy and are able to reproduce normally in the wild.

Table 6. Western Pond Turtle Rehabilitation at CCCC 2013 - July 2014

Year	Turtles Received	Turtles Released
2013	8	8
2014 (as of July)	17	16
Total	25	24

Conservation Nursery Program

SPP has become a major contributor to South Puget lowlands prairie restoration. SPP receives funding support for the Conservation Nursery Program from the Center for Natural Lands Management (CNLM) and Joint Base Lewis McChord (JBLM). Plants produced by SPP's conservation nursery are used by state and federal agencies and conservation organizations including the U.S. Fish and Wildlife Service, JBLM, WA Dept. of Fish and Wildlife, WA Dept. of Natural Resources, and CNLM. Since 2010, the Conservation Nursery Program has trained nearly 80 inmate technicians, 10 different graduate students have provided program coordination, and 3 corrections staff have served as WDOC staff liaisons.

During FY14 the conservation nursery operated at three sites: Stafford Creek Corrections Center (SCCC), Washington Corrections Center for Women (WCCW), and Shotwell's Landing Nursery. Shotwell's Landing nursery is supported by a Prairie Conservation Crew from Cedar Creek Corrections Center, a newly-established crew of 10 offender technicians who work solely on prairie restoration throughout Thurston County. The crew also serves multiple collaborating agencies and has provided greatly needed skilled labor at the CNLM seed farm and regional prairie sites. In FY14, SPP was instrumental in establishing, educating, and supervising the crew.

The fall 2013 plant delivery represented a significant milestone for the conservation nursery: we attained 1,000,000 plants delivered to our conservation collaborators since 2009 (Table 7). The 3 nursery sites now have an annual sowing capacity of 700,000 cells producing 418,000 plants, and thus we are likely to reach our *second* million plants within only a few more years. In 2014, SPP staff worked with partners from JBLM and CNLM to increase our prairie seed production as well. We built new seed beds at WCCW, and results from that effort will help inform expansion at WCCW and a new seed bed program at WCC in 2015.

Table 7. Conservation Nursery Regional Plug Summary FY14

	2009*		2010*		2011*		2012		2013		2014**		Total
	Plants	sp. #	Plants	sp. #	Plants	sp. #	Plants	sp. #	Plants	sp. #	Plants	sp. #	Plants
Sown Winter	0	0	0	0	127,200	5	272,850	24	452,368	31	478,600	38	1,331,018
Sown Summer	189,000	9	338,485	15	163,600	9	218,400	12	227,164	20	319,375	34	1,267,024
Total Sown	189,000	9	338,485	15	290,800	14	491,250	36	679,532	51	797,975	72	2,598,042
Total Sown Capacity	200,000		320,000		320,000		470,000		650,000		700,000		
Percent Capacity	95%		106%		91%		105%		105%		114%		
Total Deliver	98,000	9	173,336	15	209,057	14	336,341	38	375,242	42	12,810	4	1,106,786
% Sown Deliver	52%		51%		72%		68%		55%		n/a		
Total Request	100,000	9	415,500	17	320,600	19	421,260	42	402,000	65	418,100	72	1,977,460
sp. = Species													

*2009, 2010, 2011 SCCC only, 2011 re-location of SCCC nursery site

**2014 Sown Winter and Total Delivered as reported on May 15, 2014; season complete Oct. 2014; Total Sown Summer based on projection

In FY14 SPP staff implemented the following three strategies to improve the conservation nursery program: consistent staff presence, increased educational offerings, and professionalizing technician certification. We will continue to identify areas for improvement in the coming year. At the same time we recognize that program participation and completion are impacted by a number of factors beyond our control including infraction, release, and job change. A numerical summary of Conservation Nursery site educational offerings and site visits is provided in Table 8.

1. Increased Presence

SPP increased presence at facilities to better exemplify dedication and work ethic for inmate technicians. SPP students and staff worked alongside offenders and WDOC staff on 183 site visits. SPP student coordinators also were able to support other sustainability initiatives such as participating in sustainability committees at SCCC and WCCW.

2. Education and Training

Education and training for offender technicians is the centerpiece of SPP efforts; we strive to inform and inspire our technicians to invest in their work. SPP trained 32 technicians from CCCC, 9 at WCCW and 10 at SCCC. In FY14, SPP added lectures to emphasize regional collaboration in prairie conservation. We delivered 25 lectures on a variety of topics including: fire ecology, Taylor's checkerspot butterfly recovery, prairie plant botany, sustainable practices, and nursery cultivation. We offered cultivation workshops weekly—80 total for the 3 sites—for hands-on training. We revised and expanded our workshop curriculum to include 14 topics in horticultural production. These workshops were well-received and technicians were clearly engaged in the subject matter.

SPP produced the fourth edition of our nursery manual in January of 2014 and distributed copies to all offender technicians as reference and resource. This edition was significantly revised and enhanced from earlier versions. The manual covers conservation nursery protocols for seed stratification, sowing, insect and disease management, plant identification, irrigation technology, and equipment safety. It also includes comprehensive prairie plant profiles for the target species.

3. Technician Certification

In FY14, we improved our certification process to include a formal description of skills represented by a certificate. SPP presented certificates to 25 technicians completing either 400 hours or 800 hours of work and training (Table 9).

Table 8. Conservation Nursery Educational Offerings and Visits FY14

Type of Visit and Location	Presenter			Presentations	Participants
	SPP Nursery Manager	3 Nursery Coordinators	SPP Collaborator	Total	
Lecture					
SCCC	2	4	1	7	27
WCCW	2	4	1	7	10
CCCC - Shotwell's Landing	3	5	3	11	33
Total	7	13	5	25	70
Workshop					
SCCC	2	26	0	28	27
WCCW	2	24	1	27	10
CCCC - Shotwell's Landing	6	13	6	25	33
Total	10	63	7	80	70
Meetings, Nursery Maintenance, Oversight, and Planning					
SCCC	2	27	0	29	
WCCW	16	30	1	47	
CCCC - Shotwell's Landing	18	99	N/A	117	
Total	36	146	1	183	
Visit Totals					
SCCC	6	57	1	64	
WCCW	20	58	3	81	

CCCC - Shotwell's Landing	27	117	9	153	
Total	53	222	13	288	

Table 9. Conservation Nursery Certificates FY14

Location	800 hours	400 hours	Total	Total Participants	% Certified
SCCC	3	6	9	26	35%
WCCW	3	0	3	9	33%
CCCC - Shotwell's Landing	4	9	13	32	41%
Total	10	15	25	67	37%

Taylor's Checkerspot Butterfly Program and Other Pollinator Programs

SPP has engaged the patience and diligence of inmate technicians to achieve great success with pollinating insects. Several prisons cultivate honey bees, bolstering struggling populations of this crucial crop pollinator. Various rare and endangered butterflies are the subject for developing SPP rearing programs, and our prairie plant programs grow numerous species that provide food and habitat for these ephemeral beauties.

Our flagship pollinator program is with the Taylor's checkerspot butterfly (*Euphydryas editha taylori*), a Federally-endangered species that once flourished from southern British Columbia to central Oregon. Currently there are only a few small, isolated populations of the butterfly remaining. The SPP captive rearing facility at Mission Creek Corrections Center for Women (MCCCW) adds to the scope and resilience of recovery efforts and bolsters the original rearing program at the Oregon Zoo. The first Taylor's checkerspot caterpillars were delivered to MCCCW February 2012. The end of FY14 marks the completion of the program's third successful breeding season. Two cohorts of these animals have been cared for by inmate technicians at MCCCW throughout their complete life cycle.

Since June 2014, inmate technicians, students, corrections staff, and partners have reared and released more than 6,000 caterpillars and adult butterflies for release onto South Sound prairies. More than 18 inmate technicians have received animal husbandry training, 2 graduate students have coordinated the program, and 3 WDOC staff have served as liaisons for the program. Since fall 2013, SPP has issued 6 certificates for inmate technicians completing training in the program.

In July 2013, a total of 2,891 caterpillars went into diapause (sleep) at MCCCW for the winter. This was the first time that diapausing larvae were housed at the corrections facility in the new shed built for this purpose. The shed provided adequate conditions and 2,883 caterpillars survived diapause, resulting in an over-wintering survival rate of 99.7%. At the time of "wake up," 11 second diapause caterpillars and three caterpillars from wild lineages were transferred to the Oregon Zoo. Only three post-diapause individuals died before release. In March 2014, we released a total of 2,569 caterpillars at two sites including a newly established site at JBLM. The 300 captive-bred caterpillars that were retained, as well as wild females that were collected in the field contributed to the 2014 breeding season. Spring 2014, 4,196 eggs were collected from wild and captive bred females. Rearing outcomes for this reporting period are summarized in Table 10.

Table 10. Taylor's Checkerspot Captive Rearing and Adult Butterfly Breeding at MCCCW July 2013 - June 2014

	Into Diapause July 2013	Released February 2014	Retained for Breeding March 2014	Egg Laying Females April/May 2014	Eggs Produced May/June 2014
Wild	1,327	1021 (3 transferred to OR Zoo)	300	22 (copulated at MCCCW)	2,308
Captive-bred	1,458	1,453	0	24 (females captured in field)	1,888
Second Diapause Caterpillars	11	0 (11 transferred to Oregon Zoo)	0	N/A	N/A
Unidentifiable Caterpillars	11	11	0	N/A	N/A
Unique Lineage received from Oregon Zoo	84	84	0	N/A	N/A
Totals	2,891	2,569	300		4,196

7. Education Programs

Lecture Series

SPP's Science and Sustainability Lecture Series was in top form this year. This was largely thanks to the enthusiasm of program coordinator, Tiffany Webb, and program liaisons Paula Andrew at Washington Corrections Center (WCCW) for Women and Chris Idso at Stafford Creek Corrections Center (SCCC). At SCCC, we also attribute increased lecture series interest to the Roots of Success program. Since Roots began at SCCC (~June 2013), there was an obvious increase in students of the Lecture Series: up 40% over the previous year.

In FY14, we were able to offer an extra lecture at WCCW, and two extra lectures at other prisons. We recorded approximately 1,094 inmate-attendees at all facilities (due to repeat attendance, many inmates are counted more than once). See Tables 11-13 for summary details.

Table 11. Summary of Lecture Series at Stafford Creek Corrections Center FY14

Date	Presenter	Topic	Attendance	SPP Host
7/18/2013	<i>Tipping Point</i> documentary film	Alberta tar sands/oil	58	Brittany Gallagher
8/22/2013	Cindy Irwin, Pamela Cabanas, and Skie Bender, Wolf Haven	Wolves of Western Washington	63	Brittany Gallagher Tiffany Webb
9/19/2013	Laurie P. and Renzy, Olympia Beekeepers Association	Beekeeping	57	Tiffany Webb Carl Elliott
10/17/2013	Cierra Hunziker, National Wildlife Federation	NWF: Wildlife Habitat Certification	71	Tiffany Webb
11/21/2013	David and Claudia Supensky	For Heaven's Sake Wildlife Rescue and Rehabilitation	78	Tiffany Webb
1/23/2014	Tiffany Webb and Lindsey Hamilton	SPP Virtual Tour and TCB Program	87	Tiffany Webb
2/20/2014	Candace Vanderhoff	Greywater Reclamation	64	Tiffany Webb
4/17/2014	Carolyn Driedger, USGS Cascades Volcano Observatory	Volcanoes and Earthquakes in the PNW	51	Tiffany Webb
5/22/2014	Rosa Vissers, Yoga Behind Bars	YBB, yoga, meditation, and self-sustainability	78	Tiffany Webb
6/26/2014	Jeff Antonelis-Lapp, Evergreen	Natural History of Mt. Rainier	57	Tiffany Webb
Total			664	

Table 12. Summary of Lecture Series at Washington Corrections Center for Women FY14

7/2/2013	Jessica Levine, Middle school science teacher	Universal Laws	10	Jaal Mann Andrea Martin
8/27/2013	Erin Ellis, Evergreen	Ocean Acidification and Climate Change	21	Brittany Gallagher Tiffany Webb
9/10/2014	Wolf Haven	Endangered wolf species ecology & conservation	~25*	Tiffany Webb
10/1/2013	Paul Pickett, Evergreen	Climate Change	25	Tiffany Webb
11/5/2013	Rachel Stendahl (SPP) and Kwasi Addae, Evergreen MES	Marine Conservation and Naval Sonar	45	Tiffany Webb
12/3/2013	Cierra Hunziker, National Wildlife Federation	NWF: Wildlife Habitat Certification	27	Tiffany Webb
1/14/2014	Tiffany Webb and Lindsey Hamilton, SPP	Virtual Tour of SPP and Butterfly Conservation	38	Tiffany Webb
2/4/2014	Rosa Vissers	Yoga Behind Bars	18	Tiffany Webb
2/19/2014	Candace Vanderhoff	Greywater Reclamation	31	Tiffany Webb
3/4/2014	Anna Thurston, Advanced Botanical Resources, Inc.	Gardening with native and invasive plants	27	Tiffany Webb
4/1/2014	Thomas Pierson, USGS Cascades Volcano Observ.	Volcanoes and Earthquakes in the PNW	49	Tiffany Webb
5/6/2014	Cheryl Fimbel, CNLM	Pollinators	42	Tiffany Webb
6/3/2014	Aimee Christy, Pacific Shellfish Institute	Mussel harvest & compost, bioremediation	22	Tiffany Webb

Total			380	
-------	--	--	-----	--

* Call out sheet not available for this event; attendance estimated.

Table 13. Summary of Lecture Series at Other Prisons FY14

4/28/14	Cedar Creek	Renzy Davenport, Olympia Beekeepers Association	Beekeeping	~22*	Tiffany Webb
4/4/14	Mission Creek	Tiffany Webb and Lindsey Hamilton, SPP	SPP Virtual Tour & TCB Program	~28*	Tiffany Webb

*Call out sheet not available for this event; attendance estimated.

Since the lecture series began in 2009, we have recorded 4,000 inmate-attendees at the two main facilities, 2,420 at SCCC and 1,580 at WCCW. Counting individual students who have attended the lecture (removing repeat attendance), we have recorded 1,575 inmate-students, 851 from SCCC and 724 from WCCW. Adding 233 inmate-students from McNeil Island in 2009 and 10 brings the total to 1,808; adding lectures and workshops at CCCC and MCCCW, we estimate at least ~2000 inmate-students for the lecture series. In the future, we hope to add WSP's science and sustainability lecture series to our reporting.

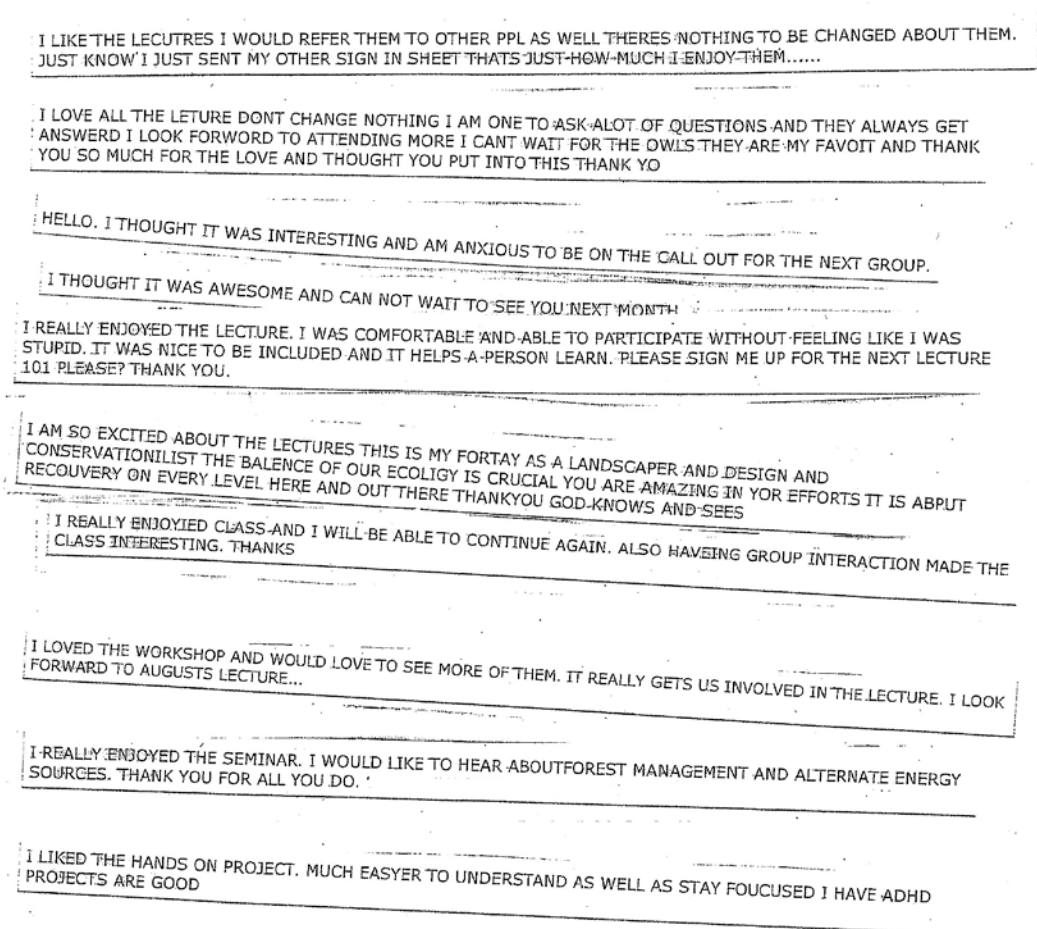


Figure 2. Participant responses sent to Paula Andrew after the sustainability workshop presented by Scott Morgan from Evergreen.

We have received very positive feedback on the lectures from inmate students (see Figure 2 for example). Anecdotally, workshops and lectures with an interactive component appear to generate the highest levels of student engagement.

This year, SPP received welcome direction from DOC staff on how to improve our certification programs. In response, we formalized our certification protocol: we standardized criteria for certification awards, clarified communications and document flow, and created a certification packet describing the program delivered to all recipients. We have also improved our record keeping to allow better tracking of certification candidacy and awards. We awarded certificates to recognize participation and skill development in our lecture series and conservation programs; lecture series awards are detailed in Table 16 and those for the conservation nursery are in Table 9. Roots of Success provided graduation certificates to all inmates who completed that program (see the previous section for more details).

Table 16. Summary of Lecture Series Certification

Facility	Certificate	
SCCC	Level 1 – 5 or more lectures	25
	Level 2 – 10 or more lectures	14
	Level 3 – 20 or more lectures	2
WCCW	Level 1 – 5 or more lectures	19
	Level 2 – 10 or more lectures	3
	Level 3 – 20 or more lectures	1
Total		64

Roots of Success

Roots of Success is an environmental literacy curriculum developed by Dr. Raquel Pinderhughes, Professor of Urban Studies & Planning at San Francisco State University (more at rootsofsuccess.org). Pilots of the program at three WA prisons were well received, and graduated 160 inmate students in the reporting period. An additional 58 students did not graduate, but completed at least the Fundamentals module of the curriculum. See Table 14 for summary details. Washington State Penitentiary (WSP) and Stafford Creek Corrections Center (SCCC) had particularly productive Roots programs. Both institutions relied on an offender-instructed approach with a minimum of staff supervision. At WSP, they integrated the program into activities in the Sustainable Practice Lab; morning classes were followed by hands-on practicum in the lab, and following graduation about 70% of the students were hired to work in the lab.

Table 14. Summary of Roots of Success Graduates FY14

Facility	Graduation date	Graduates	Instructors
SCCC	8/19/13	18	Robert Aleksinski (staff), David Duhaime, Cyril Delanto Walrond, & Grady Allan Mitchell
SCCC	11/22/13	19	
SCCC	5/7/14	21	

<i>SCCC total</i>		<i>58</i>	
WSP SPL	7/12/13	18	Robert Branscum (staff), John Oyen, Anthony Williams, Joseph McClain, Michael Oakes, Dwayne Sanders, Mike Hoover, Kieth Parkins, & Anthony Powers
WSP SPL	9/20/13	18	
WSP minimum	11/4/13	7	
WSP minimum	11/18/13	14	
WSP SPL	2/7/14	17	
WSP SPL	3/21/14	18	
<i>WSP total</i>		<i>92</i>	
CCCC	11/4/14	10	Marcus White, Stephen Percer, Rita Reynoldson (staff), Lucienne Banning (staff)
<i>CCCC total</i>		<i>10</i>	
Total for all three facilities		160	
Note: all Roots graduates receive a graduation certificate from Roots of Success.			

In response to the pilot program success, CI and SPP organized two days of instructor trainings, resulting in 38 additional certified Roots instructors from 6 prisons plus staff from SPP and CI—see Table 15 for more details. At the close of the reporting period, plans were in motion to provide Roots at 9 of the 12 prisons in WA, and add an abbreviated version of the curriculum, Expanded Fundamentals, to be offered to all CI offenders within 18 months of release.

Table 15. Summary of Roots of Success Instructor Trainings

Roots Instructors Certified	
Staff	16
Inmates	21
Total	38
Roots Instructors Certified by Facility	
Monroe CC	4
Mission Creek	4
Clallam Bay	6
Coyote Ridge	8
WCC	3
Airway	4
SPP	2
CI	7
Total	38

Note: all Roots instructors are certified by Roots of Success.

8. Evaluation

Program Updates, Surveys, and Records Request

During the reporting period, we continued evaluation of the lecture series program by participants (inmate students). For this evaluation program, we planned and began instituting improvements to the surveys and to data entry and analysis; this was in preparation for data analyses in the summer of 2014.

SPP staff developed two new survey programs, thereby synthesizing years' worth of partial efforts in these areas.

1. Adding to lecture series evaluations, we created surveys to assess guest lecturers' experience and attitudes. At the time of report writing, this program has received Human Subjects Review (HSR) approval from Evergreen and is ready to implement.
2. For the conservation programs, we created surveys that will allow inmate technicians to evaluate the program as-is and provide ideas for improvements and other sustainability programs in-prison. We modeled the surveys after those used in the lecture series program, and worked closely with DOC's Research Manager to ensure that the surveys and methodology did not require HSR. Again, at the time of report writing, we have received approval and are ready to implement the program in September, 2014.

SPP worked with multiple DOC Information Technology staff and SPP's Sustainable Operations Manager on a records request. At the same time that we defined the parameters for the ask, defined terms, and compiled comprehensive sustainability program and participant lists, we investigated two options that would enable SPP staff to satisfy records requests rather than relying on DOC research staff. This effort is still in progress, and nearing completion.

Finally, SPP responded to partners interested in evaluating aspects of SPP. We worked with graduate students from Claremont College and the Associate Director for Western Positive Psychology Association to develop an application for HSR. The focus would be to assess the impact of SPP conservation program on all stakeholders using a strengths-driven, qualitative analysis. In a separate effort, we consulted with Roots of Success staff on evaluating program impacts on inmate-students' environmental attitudes. Also, we discussed options for evaluating a nature imagery program with partners at the University of Utah.

9. SPP Network

SPP-WA

Over the past year, SPP staff significantly increased contact with prisons across Washington state. Contact included increased visits to facilities and more email and phone correspondence regarding specific programs. These initial efforts seem to be effective in shifting perspectives and further developing cohesive statewide SPP programming. In fiscal year 15, SPP is continuing these efforts and planning for a statewide gathering of representatives from corrections, conservation, and community organizations.

SPP Network-International

In FY14, SPP-WA became the primary point of contact for the SPP Network. SPP-WA continues to be recognized by other countries, states, and counties for leadership in prison-based sustainability and science programming. SPP's managers were able to provide significant support and offerings to Network participants largely by leveraging activities, programs, and outreach that also benefit SPP-WA. During FY14 a new SPP staff position was created to support evaluation, education, outreach, and SPP Network activities. Approximately 1/6 of the newly established position is dedicated to responding to Network inquiries, updating and maintaining a database of Network contacts, and supporting and coordinating Peer to Peer Mentoring efforts. Work focused on the SPP Network has been funded by the National Science Foundation and the Herb Alpert Foundation. SPP-WA has benefitted from Network development as contact with new ideas and resources has contributed to expanding and improving WA operations and aspirations.

In FY14, the SPP Network included the following correctional agencies: OR, CA, MD, UT, OH, and WA states; Multnomah, Los Angeles, and Santa Clara Counties. These 9 teams were primary collaborators at the national level. All participated in both conferences funded by the National Science Foundation and, with the exception of California, all continue to share updates and resources with the SPP Network.

Accomplishments

- Organized and facilitated Peer to Peer event for WA state: two day meeting, tour and action planning at Plan for Coyote Ridge Corrections Center (also see <http://sustainabilityinprisons.org/blog/2014/07/21/reaching-higher-at-coyote-ridge-corrections-center/>)
- Peer to peer event participation: hosting Santa Clara County (2 days)
- Hosted New Mexico team for three days; tour of SCCC, WSP, and meeting at Evergreen (September, 2013)
- Hosted OR team for three days; tour of WCCW, MCCCW, and meetings at Evergreen (November, 2013)
- Hosted University of Central Missouri graduate student for two days; tour of CCCC and meeting at Evergreen (April, 2014)
- Participated in SPP Summit hosted by Multnomah County
- Identified and contracted a web designer for updating the online professional networking site; work to be complete in FY 15.

New Interest from Outside WA

In FY14, we continued to field inquiries from potential new Network participants from multiple states and countries. A summary of national interest is provided in Figure 3. International contacts in FY14 included the United Kingdom, Fiji, the Seychelles, and Australia. Further details on extended contacts during the reporting year are provided below.

- Dr. Raquel Pinderhughes, Chad Flores, and Shamar Theus, Roots of Success, Berkeley, CA
- Meg Rao, Associate Director & Co-Founder, **Western Positive Psychology Association (WPPA)**
- Eric Erickson, Operations Manager of the **New Mexico Office of Recidivism Reduction Division**, Santa Fe, NM
- Hannah S. Rogers, Graduate Teaching Assistant, **University of Central Missouri**
- Kim Yarbray '05, Project and Communication Manager, The Center for Principled Problem Solving, **Guilford College**, Greensboro, NC

Table 17. SPP Presentations FY14

Date	Presenter	Title	Venue	Focus areas
6 times 9/13- 06/14	Drissia Ras	SPP Overview	WDOC staff and offenders	Conservation programs; SPP-WA as model for Network
11/13	WDOC Communicati ons office	SPP 5 th Anniversary	http://sustainabilityinprisons.org/stories/spp-5th-anniversary/	Partnership between Evergreen and WDOC
11/5/13	Carri LeRoy	Overview of SPP	MES program	
11/7/13	Carri LeRoy	SPP Network	MES program	
11/8/13	Joslyn Trivett & Kelli Bush	SPP Virtual tour	10 Year celebration, Evergreen	WA programs
11/8/13	Carri LeRoy	SPP Ten Year Celebration	10 Year celebration, Evergreen	
1/14/14	Tiffany Webb	SPP Virtual tour	WCCW	WA programs
1/27/14	Joslyn Trivett	SPP Overview Slideshow	http://sustainabilityinprisons.org/stories/project-overview/	Overview of philosophy and program areas
2/7/14	Tiffany Webb	Reaching Beyond Campus Silos: Connecting higher education & sustainable practices in prisons	WAHESC Conference	Graduate student experience in SPP program
2/19/14	Carri J. LeRoy	Sustainability in Prisons Project	University of Tennessee, Knoxville, TN	Overview & Science Education
3/15/14	Dan Pacholke	Department of Corrections	TEDx Monroe Correctional Complex: Turning Keys	The future of WDOC
3/15/14	Carri LeRoy	Transforming Prisons With Nature	TEDx Monroe Correctional Complex: Turning Keys	Conservation programs transforming participants
3/15/14	Nick H.	The Power of Sustainability	TEDx Monroe Correctional Complex: Turning Keys	Sustainability replacing throw away mentality
11/13/14 and 4/14	Carl Elliott	Come! Invest in our plant programs!	Potential collaborators from conservation orgs (e.g BLM, USF&W, City of Eugene, Portland Metro, City of Portland)	WA and OR conservation programs
4-24-14	Kelli Bush and Carl Elliott	Opportunities with SPP	MES program	Thesis and employment options
5/29/14	Jaal Mann	Prairie fire as a selective agent: Second-generation responses and plant community shifts	MES thesis presentations	
6/12/14	Kelli Bush and Carri LeRoy	SPP- The Evergreen State College Board of Directors	Evergreen	Current programs, student involvement, expansion
6/16/14	Joslyn Trivett	SPP Virtual Tour	Veterans' Core (with CNLM)	WA programs
6/25/14	Kelli Bush	SPP Network and SPP WA	SPP-OR Mini Summit	SPP Network and SPP WA

SPP Products, Publications, and Internships

Educational Signage

To recognize SPP as a ten year partnership between Evergreen and DOC (2003-2013), as well as SPP's contributions to prairie restoration in Puget lowlands, SPP designed and funded two 24"x36" interpretive signs. These were installed next to the Oregon white oaks planted at Evergreen and Cedar Creek Corrections Center.

SPP Publications

SPP self-published products included:

- SPP Conservation Manual, 4th Edition, prepared by Carl Elliott, Evan Hayduk, Jaal Mann, Brianna Morningred, and Drissia Ras; a full-color, 161 p. text detailing propagation and nursery practices for SPP technicians.
- Issue 4 of the SPP Newsletter, Winter 2013-14.
- Developed, updated, or maintained more than 65 protocols commonly used for SPP-WA.
- New posters for the frog and turtle conservation programs and conservation nurseries.

Formal Publications

SPP developed numerous journal articles and case studies in FY14. Several are still in review (see below), but we made substantial progress toward completion during the reporting period.

- Kaye, T.N., K.B. Bush, C. Naugle, and C.J. LeRoy. Conservation projects in prison: The case for engaging incarcerated populations in conservation and science. *Natural Areas Journal* (In review).
- Weber, S., M. Hayes, T. Webb, and C.J. LeRoy. Environmental education in prison: A comparison of teaching methods and their influence on inmate attitudes and knowledge of environmental topics. *Interdisciplinary Environmental Review* (In review).
- Aubrey, D., M. Linders, C. Landa, L. Mullen, and C.J. LeRoy. Oviposition preference of endangered Taylor's checkerspot butterflies (*Euphydryas editha taylori*) among both native and non-native larval hosts. *Northwest Science* (In review).
- Trivett, J.R., K. Bush, C. Elliott, J. Mann, R. Pond, E. Tharp, J. Vanneste, D.J. Pacholke, and C.J. LeRoy. Sustainability in Prisons Project (SPP) horticulture programs. In: *Sowing Seeds in the City: Volume II – Human Dimensions*. Springer. (In review).
- LeRoy, C.J., J.R. Trivett, K. Bush, J. Vanneste, D. Pacholke. 2013. *The Sustainability in Prisons Project Handbook: Protocols for the SPP Network, 1st Edition*. Gorham Publishing, Olympia, WA. (ISBN: 978-0988641518).
- Young, C.Y., D. Pacholke, D. Schrum, and P. Young. 2014 Keeping Prisons Safe: Transforming the Corrections Workplace. Gorham Publishing, Olympia, WA. (ISBN: 978-0-9886415-2-5).
- Trivett, J.R., K. Bush, J. Vanneste, D.J. Pacholke, and C.J. LeRoy. Sustainability in Prisons Project, United States. In: *Innovative Justice*. University of Tasmania. (In press).

Internships

In FY14, SPP staff supervised three academic internships that also benefitted SPP programs:

- Summer quarter 2013 – Field supervision of a Rehabilitation and Social Justice major from Western Washington University (undergraduate senior student) supporting garden programs, Roots of Success and other re-entry initiatives.
- Spring quarter 2014 – Field supervision of Evergreen MES internship on “Mesocosm Development: Exploring Practices and Water Quality”
- Summer quarter 2014 – Field supervision of under-graduate internship on establishing best practices and certification for beekeeping at Cedar Creek Corrections Center.

Media Coverage

In FY14, SPP-WA was featured in over 40 different pieces from local, regional, and international media outlets. The table below includes all of the pieces staff tracked during FY14. Links for each of the pieces are available on SPP's website at <http://sustainabilityinprisons.org/>

Table 18. SPP Media FY14

Date	Paper/Source	Author	Title
7/1/2013	The Scientist	Dan Cossins	Science on Lockdown
8/1/2013	BioCycle	Katrina Mendry	Correctional Facility Composting in Washington State
8/29/2013	Northwest Public Radio	Amelia Templeton	Frog Reared by Inmates Proposed for Endangered Species Protection
July/Aug. 2013	Inside DOC		Chris Idso Award
July/Aug. 2013	Correctional News	Jessie Fetterling	A Win-Win for the Environment, Prison Systems and Beyond
Summer 2013	Ensia: Environmental Solutions in Action	Monique Dubos, Benj Drummond photos	Doing good while doing time
9/4/2013	Meglio Possibile: sosentibilita applicata	Sara Occhipinti	LA NATURA ENTRA IN CARCERE: A WASHINGTON I DETENUTI AIUTANO LA RICERCA
9/9/2013	Seattle Dog Spot	Robert Pregulman	Dog training program at Stafford Creek Corrections Center an amazing success
9/16/2013	WSU News	Rachel Webber	'Butterfly Wranglers' tapped by wine industry
9/19/2013	Corrections One	Paul Sheldon	3 top online resources for going green: Find inspiration to help your own system become more environmentally sound
9/23/2013	KVEW TV	Josh Peterson	Walla Walla Inmates Raise and Release Monarch Butterflies
9/23/2013	KAPP TV	Josh Peterson	Walla Walla Inmates Release Butterflies for Research
9/30/2013	THE SPOKESMAN-REVIEW	Kaitlin Gillespie	Prison gardens provide food for inmates' tables, spirits
10/1/2013	WSU V&E Extension	David James	Mites and Microscopes: Inmates Helping with IPM
10/10/2013	Cooper Point Journal	Joe Anderson	Composting Solutions with Cedar Creek
10/28/2013	The Columbian	Emily Gillespie	Inmates harvest what they planted: Larch prisoners grow squash to benefit Clark County Food Bank
11/7/2013	Urban Gardens: Unlimited Thinking for Limited Spaces	Christine Cube	Blooms Behind Bars: Urban Gardening and Sustainability in American Prisons
11/26/2013	American Institute of Biological Sciences	Benj Drummond and Sara Joy Steele photo	Winners Selected in 2013 Faces of Biology photo contest

11/27/2013	University of Alabama in Huntsville News	Joyce Anderson-Maples	UAH alumna working with Washington Sustainability in Prisons Project
11/29/2013	France 24	Juliette LACHARNAY / Mairead DUNDAS / Marina BERTSCH	Green Jobs for Jailbirds
12/2/2013	Earth Fix	Pamplin Media Group	Rare Butterfly Gets Help From Oregon Prison Inmates
12/2/2013	Portland Tribune	Pamplin Media Group	Prison inmates help with butterfly restoration project
12/11/2013	KEPRTV.com	Frances Watson	Prison dog training program expands
12/11/2013	Food Tank	Steve Mahoney	Compost and Prisons
12/30/2013	Food Tank	Christopher G. Ramos	Worm Farm Wisdom: Growing Plants (and People) that are Full of Life
1/8/2014	KHQ-Q6	Kelsey Watts	Share on twitter, Prisoners With Puppies: A Look Inside Spokane's Pawsitive Dogs Program
1/20/2014	High Country News		Sustainability in Higher Ed
1/31/2014	Christian Science Monitor	Donna Simpson	To cut food waste costs, Washington prison turn to worms
2/1/2014	Seattle Met	Allison Williams	The Truth about Cons and Dogs
2/6/2014	Food Tank	Jaclyn Castellanos	Prison Inmates Gardening at Cedar Creek Correctional Center: A Volunteer's Perspective
3/1/2014	Beastly Banner	Joe Greathouse	Sustainability in Prisons Project: Building capacity for conservation
3/1/2014	Ecology News		The International Picture for Wildlife in Prisons
3/18/2014	The Wall Street Journal	Joel Millman	Prisons give rescue dogs a second chance
4/9/2014	Seattle Times	Paige Cornwell	Inmates feel better, too, after helping ill turtles
4/9/2014	King5	Lori Matsukawa	State prisoners nurture endangered turtles
5/12/2014	Portland Tribune	Caitlin Feldman	A transformative project: Coffee Creek inmates harvest leaves for Oregon Zoo's effort to save endangered butterflies
5/23/2014	The Tacoma News Tribune	Phuong Le	Artillery fire, butterflies coexist on Army range

7/1/2014	National Correctional Industries Association: Green Edition	Joslyn Rose Trivett	Correctional Industries' Dedication to Roots of Success
7/2/2014	Multnomah County website		Office of Sustainability and Sheriff's Office Collaborate on Regional Sustainability in Prisons Conference
7/23/2014	Mother Nature Network	Sidney Stevens	A (greener) life behind bars

Website/Social Media

During the reporting period, we created 36 new posts or blogs. In addition, we added 12 partner (organization) profile pages, such as <http://sustainabilityinprisons.org/about/washington-department-of-corrections-wdoc/> and three partner (individual) profiles for SPP liaisons, such as <http://sustainabilityinprisons.org/about/washington-department-of-corrections-wdoc/partner-profile-paula-andrew/>.

We updated nearly every page in the website (91 pages total) to represent current programming and practices (e.g., <http://sustainabilityinprisons.org/what-we-do/spp-programs-in-washington-state-prisons/> and <http://sustainabilityinprisons.org/about/>) and maintained our video (<http://sustainabilityinprisons.org/blog-galleries/stories/>) and press libraries (<http://sustainabilityinprisons.org/press/>). We added many new banner photos to highlight gorgeous contributions from Benj Drummond and Sarah Joy Steele and other contributors.

According to google analytics, the site had 44,598 page views during the reporting period, and average time spent per page was 1 minute, 46 seconds and an average of 2.5 pages per visit. More than 70% of the visitors were new versus returning visitors. The five most popular pages were:

1. / (homepage)
2. /stories/
3. /blog/2013/11/23/and-then-there-were-three-third-hoop-house-complete-at-washington-corrections-center-for-women/
4. /what-we-do/
5. /about/

SPP's main outlet for social media continues to be Facebook (www.facebook.com/sustainableprisons). During the reporting year, we posted ~170 items on a wide variety of topics, and our Likes increased from 530 to 861. The posts that reached the most people were:

- July 10, 2013 Dan Pacholke and Andrea Martin TEDx talk (re-post) – 6.9K (6.5K Paid reach)
- August 14, 2013, WDOC 5 Year anniversary video – 1K
- December 6, 2013, Quote from Nelson Mandela ("A garden was one of the few things in prison that one could control...") – 899
- April 24, 2014, Dan Pacholke's TEDx talk – 822
- April 28, 2014, Nick H. TEDx talk – 814
- April 10, 2014, Western pond turtle story, Seattle Times – 778
- May 15, 2014, Jamar Glenn blog - 777

Awards

Two leaders of SPP programming were recognized with Annual Agency Awards: Paula Andrew who was SPP Liaison at WCCW, and Wayne George who has been the main force behind the bicycle restoration program at SCCC. The nominations for both highlighted their efforts in sustainability programs, among other areas.

Appendix 1. SPP Programs in Washington State Prisons

Major program areas and highlights indicated; program partners indicated where that information is available.

Airway Height Corrections Center

- Gardens : 60-70 inmate gardeners, 34,000 lbs grown for the kitchen in 2013
- Pawsitive dog training – prison program: dog training and adoption, partnering with Diamonds in the Ruff and SpokAnimal
- Recycling and waste sorting
- Workshops
- Master Gardening classes
- Food waste composting (shipped offsite to commercial composter); developing a bark composting program
- Firewood donation program – partnering with SNAP Spokane; cut and delivered 303 cords of wood to low income and senior citizens last cold season (2012-2013); on track to donate 800 cords this cold season
- LEED Silver certification for two buildings

Cedar Creek Corrections Center

- Beekeeping: bee colony collapse research, honey collection, manufacturing lotion and lip balms from beeswax, Olympia Beekeepers Association certification for staff and inmates
- Large-scale, in-vessel composting; inmate's story on composting
- Vermicomposting
- Endangered species conservation programs: Oregon spotted frog rearing; Western pond turtle rehabilitation; cricket rearing, partnerships with Joint Base Lewis-McChord, Washington Department of Fish and Wildlife, Oregon Zoo, Woodland Park Zoo, Northwest Trek, Point Defiance Zoo and Aquarium, and PAWS
- Prairie restoration crew, partnership with Center for Natural Lands Management, Joint Base Lewis-McChord, Washington Department of Natural Resources, Washington Department of Fish and Wildlife, U.S. Fish and Wildlife Service, Oregon Zoo, Pacific Rim Institute for Environmental Stewardship, Whidbey-Camano Land Trust, Friends of Puget Prairies, Wolf Haven International, and City of Steilacoom
- Gardens
- Horticulture program with vocational college credits, partnership with Centralia College
- Pet program: dog training for veterans, dog training and adoption, in partnership with Brigadoon Service Dogs
- Recycling and waste sorting
- Tilapia and aquaponics
- Water reduction and catchment
- LEED certified Perimeter Control Office, new construction
- Roots of success, workshops

Clallam Bay Corrections Center

- Gardens: growing for the prison kitchen
- Dog training and adoption

- Composting: developing in-vessel system on site
- Recycling and waste sorting
- Soon to have Roots of Success
- Developing waste water heat recapture program, partnership with the Center for Sustainable Infrastructure

Coyote Ridge Corrections Center

- Gardens
- Dog training and adoption in partnership with Adams County Pet Rescue
- Food waste composting (shipped offsite to commercial composter)
- Recycling and waste sorting
- 2014 pilot to eliminate single-use plastics
- LEED Gold certified campus
- Roots of Success

Larch Corrections Center

- Gardens
- Food bank crop donations, partnership with Clark County Food Bank
- Pet program: cat socialization and adoption
- Large-scale, in-vessel composting
- Recycling and waste sorting
- House plants in living units, in cells and in dorm windows – pilot program
- First Washington state prison to eliminate trash can liners
- Waste reduction led by kitchen staff

Mission Creek Corrections Center for Women

- Endangered species conservation program: Taylor's checkerspot butterfly rearing and release, partnership with U.S. Fish and Wildlife, WA Department of Fish and Wildlife, Joint Base Lewis-McChord, and the Oregon Zoo
- Gardens
- Small-scale composting
- Recycling and waste sorting
- Dog training and adoption
- Water use reduction and water catchment
- Workshops
- Project Feeder Watch: bird identification and data collection (pilot program)
- LEED Silver Certified living unit, new construction
- Salmon habitat restoration, partnership with Hood Canal Salmon Enhancement Group
- Soon to have Roots of Success

Monroe Correctional Complex

- Vermiculture and vermicomposting, partnership with City of Monroe
- Gardens
- Greenhouses
- Horticulture program with vocational college credits, partnership with Edmonds Community College

- Pet program: dog & cat training and adoption, cat program in partnership with Purrfect Pals
- Composting
- Recycling and waste sorting: large-scale with pick-line
- Recycling and repurposing wood, donations to Monroe Senior Center
- Water use reduction and water catchment
- Workshops
- Bicycle repair, partnership with Snohomish County Sheriff's Office
- Medical equipment refurbishment
- LEED-Certified Buildings: three buildings at Monroe Correctional Complex are rated gold or silver
- Soon to have Roots of Success

Olympic Corrections Center

- Gardens
- Horticulture program, partnership with Peninsula College
- Pet program: dog training and adoption, partnership with Clallam County Humane Society
- Large-scale, in-vessel composting (including waste from Clallam Bay Corrections Center)
- Recycling and waste sorting
- Wood recycling and repurposing, partnership with Westport Shipyard and donations benefiting Quillayute Valley School District
- Water use reduction and water catchment
- Ponds for every living unit!

Stafford Creek Corrections Center

- Beekeeping
- Birdhouses
- Large-scale, in-vessel composting
- SPP's first Conservation nursery for rare and endangered prairie plants, partnership with Center for Natural Lands Management, Joint Base Lewis-McChord, Washington Department of Natural Resources, Washington Department of Fish and Wildlife, U.S. Fish and Wildlife Service, Oregon Zoo, Pacific Rim Institute for Environmental Stewardship, Whidbey-Camano Land Trust, Friends of Puget Prairies, and Wolf Haven International
- Gardens
- Greenhouses
- Pet program: dog training and adoption, partnership with North Beach Paws
- Recycling and waste sorting: large-scale with pick-line
- Tilapia – approximately 60,000 fish in 22 tanks, harvested at regular intervals for in-prison menu, partnership with Correctional Industries
- Water use reduction and water catchment
- Bicycle repair, partnership with local Lions Club
- Science and Sustainability lecture series
- Medical equipment refurbishment, partnership with Joni and Friends: Wheels for the World
- Roots of Success

Washington Corrections Center

- Large-scale, in-vessel composting
- Gardens

- Food bank crop donations
- Recycling and waste sorting
- Shoe and clothing recycling, partnership with Correctional Industries
- Developing conservation nursery for rare and endangered prairie plants and horticultural program, partnership with Centralia College, Joint Base Lewis-McChord, and the Center for Natural Lands Management
- Soon to have Roots of Success

Washington Corrections Center for Women

- Conservation nursery for rare and endangered prairie plants, partnership with Center for Natural Lands Management, Joint Base Lewis-McChord, Washington Department of Natural Resources, Washington Department of Fish and Wildlife, U.S. Fish and Wildlife Service, Oregon Zoo, Pacific Rim Institute for Environmental Stewardship, Whidbey-Camano Land Trust, Friends of Puget Prairies, and Wolf Haven International
- Gardens – partnership with WSU Extension, Pierce County
- Horticulture program with vocational college credits, partnership with Tacoma Community College
- Pet Program: Prison Pet Partnership
- Bee keeping, including certification process for inmate beekeepers, partnership with Mother Earth Farm
- Large-scale, in-vessel composting
- Recycling and waste sorting
- Science and Sustainability lecture series

Washington State Penitentiary

- Rare species conservation program: Monarch butterfly captive rearing, release, and tracking, partnership with Washington State University Department of Entomology
- Integrated Pest Management lab: characterizing microscopic beneficial and pest insect communities in the grape growing industry, partnership with Washington State University Extension
- Gardens
- Bee keeping
- Pet Program: dog training and adoption (partnership with Blue Mountain Humane Society), cat training and adoption
- Recycling and waste sorting: large-scale with pick-line
- Hazardous waste reduction by 95%
- Sustainable Practices Lab: furniture repair, vermicomposting, bicycle and medical equipment refurbishment, fabric and wood re-use, and sign shop
- Roots of Success

Total ~113

Appendix 2. SPP Partner Organizations FY14

- Blue Mountain Humane Society
- Brigadoon Service dogs
- Center for Natural Lands Management
- Center for Sustainable Infrastructure
- Centralia College
- City of Monroe
- City of Steilacoom
- Clallam County Humane Society
- Clark County Food Bank
- Correctional Industries
- Department of Natural Resources
- Diamonds in the Ruff
- Edmonds Community College
- Friends of Puget Prairies
- Guest lecturers from various colleges, natural resources agencies, non-profits, and businesses
- Hood Canal Salmon Enhancement Group
- Joint Base Lewis-McChord
- Joni and Friends: Wheels for the World
- Kiwanis Club of Olympia
- Lands Council
- Lions Club
- Master Gardeners
- Mason County Food Bank
- Monroe Senior Center
- Mother Earth Farm
- North Beach Paws
- Northwest Trek Wildlife Park
- Olympia Beekeepers Association
- Oregon Zoo
- Pacific Rim Institute for Environmental Stewardship
- PAWS
- Peninsula College
- Pierce County Emergency Food Network
- Point Defiance Zoo and Aquarium
- Prison Pet Partnership
- Purrfect Pals
- Quillayute Valley School District
- Roots of Success
- SNAP Spokane
- Snohomish County Sherriff's Office

- Spokanimal
- Tacoma Community College
- U.S. Fish and Wildlife Service
- US Green Building Council
- Washington Department of Fish and Wildlife
- Washington State University Department of Entomology
- Washington State University Extension
- Washington State Parks
- Westport Shipyard
- Whidbey-Camano Land Trust
- Wolf Haven International
- Woodland Park Zoo
- WSU Extension, Pierce County